



Cite this article: Keely CC, Hale JM, Heard GW, Parris KM, Sumner J, Hamer AJ, Melville J. 2015 Genetic structure and diversity of the endangered growling grass frog in a rapidly urbanizing region. *R. Soc. open sci.* **2**: 140255. <http://dx.doi.org/10.1098/rsos.140255>

Received: 22 August 2014

Accepted: 27 July 2015

Subject Category:

Genetics

Subject Areas:

genetics

Keywords:

Litoria raniformis, urbanization, genetic diversity, haplotype

Author for correspondence:

Claire C. Keely

e-mail: c.keely@pgrad.unimelb.edu.au

Electronic supplementary material is available at <http://dx.doi.org/10.1098/rsos.140255> or via <http://rsos.royalsocietypublishing.org>.

Genetic structure and diversity of the endangered growling grass frog in a rapidly urbanizing region

Claire C. Keely^{1,3}, Joshua M. Hale³, Geoffrey W. Heard¹, Kirsten M. Parris¹, Joanna Sumner³, Andrew J. Hamer² and Jane Melville³

¹School of BioSciences, and ²Australian Research Centre for Urban Ecology, Royal Botanic Gardens Melbourne c/o School of BioSciences, University of Melbourne, Parkville 3010, Australia

³Sciences Department, Museum Victoria, Carlton 3053, Australia

Two pervasive and fundamental impacts of urbanization are the loss and fragmentation of natural habitats. From a genetic perspective, these impacts manifest as reduced genetic diversity and ultimately reduced genetic viability. The growling grass frog (*Litoria raniformis*) is listed as vulnerable to extinction in Australia, and endangered in the state of Victoria. Remaining populations of this species in and around the city of Melbourne are threatened by habitat loss, degradation and fragmentation due to urban expansion. We used mitochondrial DNA (mtDNA) and microsatellites to study the genetic structure and diversity of *L. raniformis* across Melbourne's urban fringe, and also screened four nuclear gene regions (POMC, RAG-1, Rhod and CRYBA1). The mtDNA and nuclear DNA sequences revealed low levels of genetic diversity throughout remnant populations of *L. raniformis*. However, one of the four regions studied, Cardinia, exhibited relatively high genetic diversity and several unique haplotypes, suggesting this region should be recognized as a separate Management Unit. We discuss the implications of these results for the conservation of *L. raniformis* in urbanizing landscapes, particularly the potential risks and benefits of translocation, which remains a contentious management approach for this species.

1. Introduction

Urbanization represents a growing threat to the conservation of biodiversity. The impacts of urbanization on biodiversity are numerous [1], but a pervasive and fundamental effect

is the loss and fragmentation of habitat [2,3]. From a genetic perspective, these impacts manifest as reduced genetic diversity and ultimately reduced genetic viability, as a result of declines in local population size and changes in the rate of dispersal between habitat patches. Populations in small habitat fragments also suffer from edge effects and increased exposure to predators [4], as well as fine-scale changes in microclimate and other attributes that influence habitat quality [5,6]. The resulting small, fragmented populations are susceptible to genetic drift and inbreeding depression [7], both of which can lead to the erosion of genetic diversity and genetic viability [8]. These impacts are a pervasive problem in urban areas and as such, conservation genetics has become an important tool for the management of threatened species in urban landscapes.

Assessing the genetic origins of populations and effectively managing genetic diversity are central to their persistence in both the short and long term [9,10]. Genetic analyses of population structure, dispersal and gene flow can improve our understanding of how species respond to landscape change [11], and hence provide insights into landscape modifications that may reduce isolation and the extinction risk of fragmented populations [12]. Genetic information is also vital for active manipulation of populations fragmented by urban development, such as population augmentation and translocation [13]. In many cases, initiatives such as these seek to restore the fitness of populations exhibiting symptoms of inbreeding depression, by introducing individuals (and hence, genes) from related populations [14]. However, without prior knowledge of the genetic structure of a species, there is a risk of altering the genetic structure of populations [15], potentially causing problems such as outbreeding depression or hybridization of divergent evolutionary lineages [16]. Thus, detailed knowledge of the population genetic structure of a species is essential prior to the initiation of programmes aimed at genetic rescue, such as population augmentation and translocation.

The proportion of the world's human population living in urban areas grew rapidly during the twentieth century, from an estimated 220 million to 2.8 billion [17]. Australia is expected to become the world's fastest growing industrialized nation over the next four decades [18], and Melbourne—the capital city of the state of Victoria—is the fastest growing major city in Australia [19]. The Melbourne Metropolitan Area (MMA) currently covers approximately 7500 km² and has a population of approximately 4.25 million people [20]. Recent expansions of the urban growth boundary will increase the MMA by an additional 400 km² over the next 20 years [21]. Urban growth is expected to negatively impact the genetic diversity and viability of several threatened species in this region [21].

In this study, we investigated the conservation genetics of the endangered growling grass frog (*Litoria raniformis*) in the MMA. This species has declined markedly over the last three decades, yet significant remnant populations persist in the low-altitude, urban-fringe environments to the southwest (Wyndham), northwest (Melton), north (Hume–Whittlesea) and southeast (Cardinia) of Melbourne (figure 1). We used mitochondrial DNA (mtDNA: cytochrome oxidase I (COI) and ND4), four nuclear gene regions (POMC, RAG-1, Rhod and CRYBA1) and microsatellite genotyping to investigate the genetic structure and diversity of *L. raniformis* across Melbourne. We predict that: (i) genetic diversity of *L. raniformis* across Melbourne's urban fringe is low due to past declines and more recent habitat loss and fragmentation from urbanization, (ii) a genetic bottleneck may have occurred as a result of these processes, and (iii) genetic structuring is present between remnant populations in Cardinia and the other three regions, due both to the fundamental geographical isolation of this region and to the more recent loss of connecting populations (figure 1).

2. Material and methods

2.1. Study species

Litoria raniformis is a semi-aquatic species that inhabits still or slow-flowing sections of streams, as well as lentic wetlands [22]. This species was abundant across much of southeastern Australia [23]; however, it has declined significantly since the late 1970s and the frog is now listed as endangered [24,25]. Although numerous threatening processes drove this decline, the arrival of the chytrid fungus (*Batrachochytrium dendrobatidis*) in southeastern Australia and resulting epidemics of chytridiomycosis were almost certainly a major contributor [26]. Populations at higher altitude were particularly affected [27], but low-altitude populations survived in areas less suitable for chytrid [28], allowing functioning metapopulations to be maintained, particularly in regions with a high density and connectivity of wetland habitats [29–31].

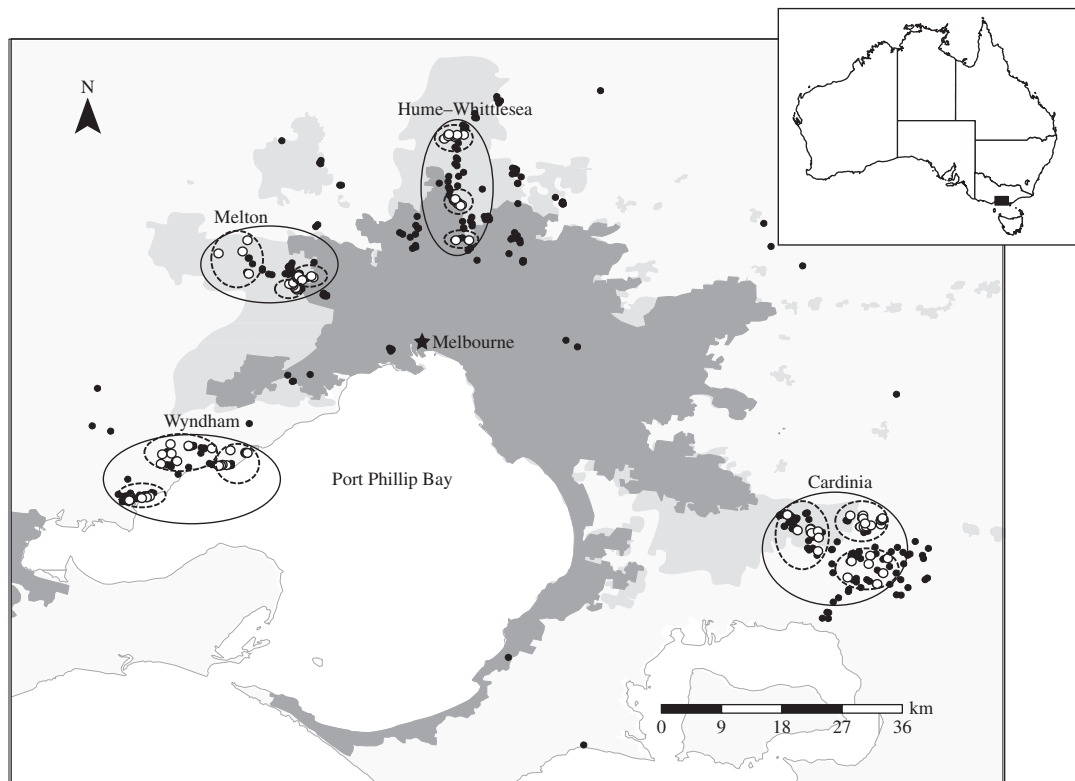


Figure 1. Geographical distribution and sample sites of *L. raniformis* around Melbourne. Dark grey, current MMA; light grey, proposed urban growth area. Closed circles indicate detection records between 2000 and the present. Open circles indicate the location of sampling sites included in this study. The four study regions around Melbourne are indicated and clusters of sites within these regions circled (dashed lines).

Despite persisting through the declines last century, remnant populations of *L. raniformis* around Melbourne are now threatened by the rapid pace of urban expansion. Urbanization has led to wetland loss, degradation and fragmentation in each of the four regions in which significant remnant populations of *L. raniformis* persist (Wyndham, Melton, Hume–Whittlesea and Cardinia; figure 1), and this has caused the loss and fragmentation of some populations in recent years [32]. This process will continue over the next three decades, with these regions being designated urban growth areas in which the proposed urban boundaries encompass numerous remaining populations of *L. raniformis* (figure 1) [33].

2.2. Study area and field sampling

Tissue samples ($N = 377$) were collected from remnant populations of *L. raniformis* in the Wyndham, Melton, Hume–Whittlesea and Cardinia regions (figure 1). One hundred and seven samples were collected from Hume–Whittlesea as part of a previous study [30] (see below). The remaining samples ($N = 270$) were collected during the current study between December 2010 and March 2011 across the other three regions. We divided each region into three geographical clusters of sites for the purposes of sampling (12 clusters altogether, figure 1). We chose these clusters to maximize the geographical area sampled within each region, and to encompass networks of sites likely to support metapopulations of *L. raniformis* [30,34]. Sampling sites ($N = 73$) included slow-flowing pools along streams, as well as farm dams, swamps and water-treatment ponds. Between 1 and 10 individuals were sampled per site depending on population size and capture success.

Genetic samples were obtained from each frog by clipping a triangular section of toe webbing (approx. 2 mm at the base) between the second and third toes closest to the body on the left hind limb. Toe web samples were stored in 95% ethanol and kept at -18°C for approximately two weeks, then -80°C for up to 3.5 months. Further details on these samples may be found in electronic supplementary material, S1. Latex gloves were worn when taking samples and were changed between individuals. Tissue sampling equipment was also sterilized in 70% ethanol between frogs to prevent the spread of pathogens such as the chytrid fungus.

Samples from Hume–Whittlesea were collected between October 2004 and February 2006 as part of a study on the metapopulation dynamics of *L. raniformis* in this region [30] (figure 1). In that study, frogs were captured by hand during spotlight surveys and tissue samples obtained by clipping the toe-pad on the left middle digit of the front left limb following standard procedures (see [35] for additional details).

2.3. DNA extraction and sequencing

We sequenced the mitochondrial gene COI for all 377 samples and a subset of samples ($N = 112$) were sequenced for NADH dehydrogenase subunit 4 (ND4) encompassing all COI haplotypes and geographical regions. Each of these gene regions have been shown to be variable in previous studies of *L. raniformis* [36,37]. We also sequenced four nuclear gene regions (POMC, RAG-1, Rhod, CRYBA1 for a subset of 19 samples each, encompassing the extent of mtDNA haplotypic diversity) that are known to be variable at an intraspecific level in frogs [38–41].

Samples collected in the Hume–Whittlesea region were extracted and sequenced for COI as part of a previous, as yet unpublished, study [37]. We sequenced all other gene regions for these samples as part of this study. Samples collected from all other geographical areas were extracted and sequenced for all gene regions during this study. In all cases, genomic DNA was extracted using a DNeasy Blood & Tissue Kit (QIAGEN) using the manufacturer's animal tissue protocol.

We performed PCR amplification of the samples from Wyndham, Melton and Cardinia in a 20 μ l total volume with 2 μ l of DNA template, 10 μ l GoTaq Hot Start Polymerase (Promega) (25 mM MgCl₂, GoTaq Hot Start Polymerase, 5 \times Colourless GoTaq Flexi Buffer, 5 \times Green GoTaq Flexi Buffer), 1 μ M forward primer, 1 μ M reverse primer and 6 μ l dH₂O. We amplified a partial sequence of 495 bp of COI, using the primers Cox (5'-TGATTCTTGGGCATCCTGAAG-3') and Coy (5'-GGGGTAGTCAGAATAGCGTCG-3') [42]. Amplification involved 95°C 2 min, 37 cycles of 95°C 30 s, 50°C 45 s, 72°C 45 s, followed by 72°C 5 min (adapted from [43]). For COI amplification protocol of samples from Hume–Whittlesea, refer to Hale *et al.* [37].

We amplified a partial sequence of 665 bp of ND4 for the subset of 112 samples (drawn from samples in all four regions), using the primers ND4-3 (F) (5'-TTAGCAGGAACACTTCTAAACTAG-3') and ND4-1 (R) (5'-GAAAGTGTTCATCTCTAG-3') [36]. Amplification involved 95°C 2 min, 30 cycles of 95°C 30 s, 50°C 60 s, 72°C 45 s, followed by 72°C 5 min (adapted from [36]). Additionally, we screened four nuclear gene regions: proopiomelanocortin A (POMC), recombinase activating gene 1 (RAG-1), Rhodopsin (Rhod) and β -crystallin (CRYBA1), using a subset of 19 samples that each sequenced a different haplotype at the COI gene region (including two samples from the Hume–Whittlesea region). Protocols are provided in electronic supplementary material, S2.

We diluted extracted DNA to a ratio of 1 : 10 with dH₂O in all cases. We routinely included negative controls and checked for contamination. Following successful amplification, we purified PCR products using ExoSAP-IT (USB) following the manufacturer's instructions and sent the purified products to Macrogen (Korea) for sequencing using a 3730XL DNA sequencer (ABI). We BLAST searched all sequences to confirm identity and aligned them using GENEIOUS PRO v. 5.6 [43]. We repeat sequenced all novel haplotypes.

2.4. Microsatellite genotyping

We genotyped four polymorphic microsatellite markers (Lr2, Lr6, Lr7 and Lr9) as described by Hale *et al.* [44], in two sets of two marker multiplex PCR amplifications, for a subset of 117 samples (including 27 samples from Hume–Whittlesea). The microsatellite loci chosen for this study had previously been developed and successfully genotyped for *L. raniformis* around Melbourne [44]. Three markers incorporated a GTTCTT 'pigtail' added to the 5' end of the reverse primer to reduce variation in stutter (Lr2, Lr6 and Lr9). See Hale *et al.* [44] for methods for fluorescently labelling fragments for all loci. The PCR was performed in a 10 μ l total volume with 1 μ l of DNA template (neat), 5 μ l GoTaq Hot Start Polymerase (Promega) (25 mM MgCl₂, GoTaq Hot Start Polymerase, 5 \times Colourless GoTaq Flexi Buffer, 5 \times Green GoTaq Flexi Buffer), 0.5 μ M reverse primer, 0.15 μ M forward primer, 0.25 μ M fluorescently labelled 454A primer and 3.1 μ l dH₂O. Amplification involved 95°C 2 min, 42 cycles of 95°C 30 s, 50°C 45 s, 72°C 45 s, followed by 72°C 5 min (adapted from Hale *et al.* [44]). Fragment analysis of PCR products were carried out by Macrogen on an Applied Biosystems ABI3730XL DNA analyser using a LIZ-500 size standard. Scoring was completed using GENEIOUS PRO v. 5.6, and all samples were screened manually for accuracy.

2.5. Data analyses

We estimated completeness of haplotype sampling of populations using the Stirling probability distribution and Bayes' theorem [45]. Median-joining haplotype networks were built using the program NETWORK v. 4.610 [46] for COI and ND4 sequence data, for individual gene regions and a concatenated dataset. Haplotype networks were used, as they better illustrate intraspecific genetic divergence when the number of mutations between haplotypes is small [47].

We used DNASP v. 5.10.1 [48] to detect signatures of a past genetic bottleneck based on mtDNA, estimating: (1) Tajima's test statistic (D), where a large, positive value of D is consistent with a population that has experienced a recent bottleneck [49], (2) Fu's test statistic (F_S), which assesses the number of rare alleles in the population and departures from conditions of neutrality [50], and (3) the raggedness statistic (r), which quantifies the smoothness of the observed mismatch distribution and indicates whether populations are expanding or contracting. A substantial mismatch is characteristic of a population not at equilibrium [51]. Values were determined for both COI separately, and then the COI and ND4 concatenated dataset.

For the microsatellite data, we used MICRO-CHECKER (v. 2.2.3) [52] to test for the presence of null alleles, large allele dropout and scoring error due to stuttering. This was calculated across the entire dataset prior to analysing the number of genetic populations present and then for each genetic population individually once these populations had been identified. Expected and observed heterozygosities (H_E and H_O , respectively) were implemented in GENEPOP v. 4.2 [53] with default settings, to assess for linkage disequilibrium and deviations from Hardy–Weinberg equilibrium (HWE) across the four microsatellite loci for each population. Significance values were altered for multiple simultaneous tests using the false discovery rate (FDR) correction [54]. We calculated average allelic richness for each population, using HP-RARE v. 1.0, which accounts for differences in sample size [55]. F_{ST} between populations was calculated using GENALEX v. 6.5 [56].

We estimated the number of distinct genetic populations using microsatellites for a subset of 117 samples in the Bayesian population clustering program STRUCTURE v. 2.3.4 [57]. We used a correlated frequency model (to increase the power to detect subtle population structure) with admixture (the recommended starting point). The LOCPRIOR model was used, which can incorporate prior information when the signal of structuring is relatively weak [58]. We used geographical region (coded as one of the four regions from which samples were collected, see figure 1) as prior information. Each run had a burn-in of 100 000 Markov chain Monte Carlo samples, with a further 100 000 samples used to characterize population structure. The number of genetic populations (K) was set to range from 1 to 12 (where 12 is the number of clusters within regions). Simulations were run 10 times for each proposed value of K . We are confident that the chains had converged, as several runs at each K with different run lengths gave consistent parameter values. To determine K , we used STRUCTURE HARVESTER v. 0.6.93 [59], which plots the mean estimated log probability of the data, $\log_e \Pr(X|K)$, as well as the rate of change in the log probability of the data between successive K estimates. The value of K with the highest rate of change and the largest mean $\log_e \Pr(X|K)$ was selected [60,61]. The alternative inclusion of geographical cluster and COI haplotype as prior information led to ambiguous results with regard to K and weak structure that did not seem biologically applicable (e.g. testing $K = 1$ –12 and a LOCPRIOR of geographical cluster generated $K = 3$ or 10, and testing $K = 1$ –20 and a LOCPRIOR of COI haplotype generated $K = 2$; electronic supplementary material, S3).

To detect the signature of a past bottleneck from the microsatellite data, we used BOTTLENECK v. 1.2.02 [62,63] and M -ratio tests calculated in M_P_VAL and Critical_M [64] for each of the two populations. In BOTTLENECK, we tested for heterozygosity excess, indicative of population size reduction, using a Wilcoxon test applied to a two-phase model, with 78% single step mutations, as recommended by Peery *et al.* [65] and a variance of 12 [63]. An FDR adjustment for multiple comparisons was applied. M -ratio tests were calculated in M_P_VAL, using data formatted in FORMATOMATIC v. 0.8.1 [66]. M -ratio tests are based on the ratio of the number of microsatellite alleles to the range in allele size. During a bottleneck, the number of alleles is expected to decline faster than the range in allele size, so the M -ratio is expected to be smaller in bottlenecked populations [65].

The M -ratio method is likely to detect older events than tests based on heterozygosity, because more time is required for the M -statistic to reach equilibrium [67]. Three parameters are required for M_P_VAL: theta ($\theta = 4N_e\mu$, where N_e = effective population size and μ = per generation mutation rate), the average size of mutations that are not one-step and the proportion of multi-step mutations. We calculated θ for each population identified by the preceding STRUCTURE analysis using MIGRATE v. 3.6.6 [68]. We employed a Brownian motion model, using four static heating chains (1, 1.5, 3 and 1 000 000), swapping

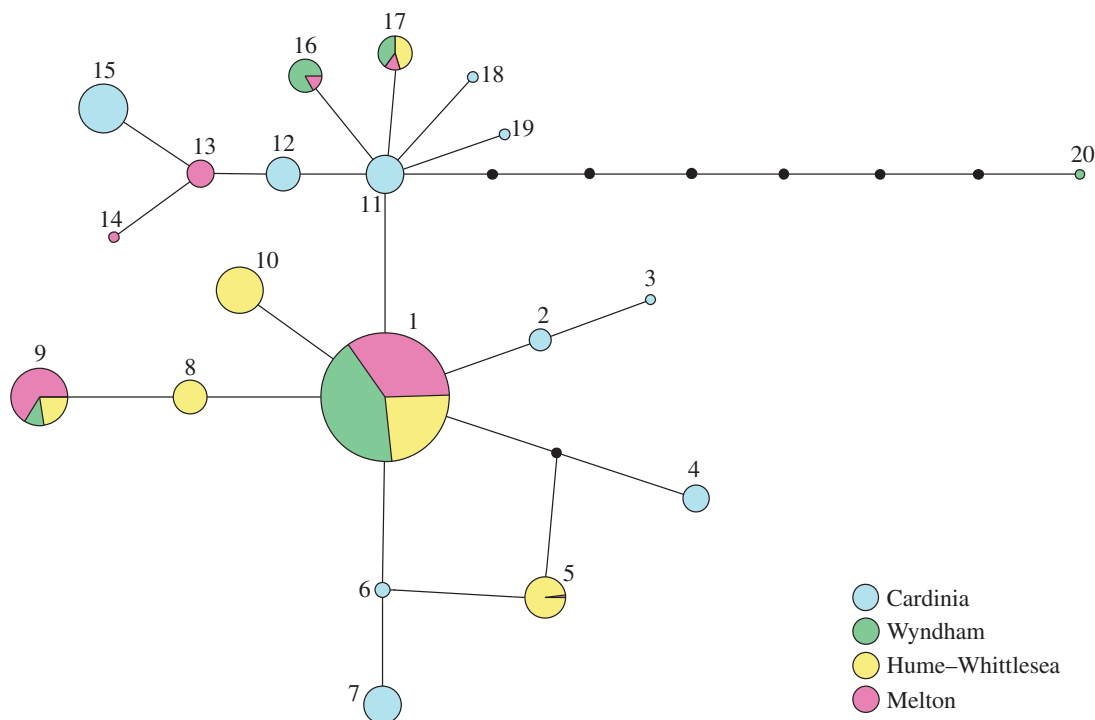


Figure 2. Haplotype network for 495 bp of the COI gene. Each pie represents a unique genetic sequence (haplotype) and the area of the pie is proportional to haplotype frequency within the entire dataset. Each line represents one mutational step. Small black circles correspond to inferred alleles, missing from the dataset.

among chains every 10 steps. For each model, we performed 1 000 000 steps, sampled every 100 steps, with a burn-in length of 100 000 steps. The average size of mutations that are not one-step was set as the default 2.8 [64] and 0.22 was used as the recommended proportion of multi-step mutations [65]. Values of M were compared with the critical value (M_C), calculated in Critical_M, estimated after 10 000 simulations. In all the analyses using microsatellite data, the low number of markers used could have limited the power of our methods to detect a bottleneck. However, methods based on examining mtDNA haplotypes can be more powerful for detecting bottlenecks than microsatellite methods based on genetic structure [69].

3. Results

3.1. Genetic diversity

The posterior probabilities of completeness of haplotype sampling, $\Pr(n = x)$, were high for all regions (more than 0.99), indicating a high likelihood that all haplotypes from each region were sampled. At the finer scale, with regions separated into their component site clusters, there was at least 99% certainty of completeness of sampling for all clusters ($\Pr(n = x) \geq 0.99$) except the southern-most cluster from the Cardinia region, at which $\Pr(n = x) = 0.75$. Overall, there was a high probability that all COI haplotypes were sampled.

A haplotype network was constructed from the 377 aligned COI mitochondrial gene regions (figure 2). In total, there were 22 polymorphic sites, representing 20 distinct haplotypes. Five haplotypes were present in the Wyndham region, seven in Melton, six in Hume-Whittlesea and 10 in Cardinia. There was a common 'central' haplotype present (haplotype 1), representing 167 of the 377 samples. All observed haplotypes were a maximum of four mutational steps away from this central haplotype, except one sample from the Wyndham region, which was eight mutational steps away (haplotype 20). One haplotype was unique to the Wyndham region (haplotype 20), two Melton haplotypes were unique (haplotypes 13 and 14), two haplotypes were unique to Hume-Whittlesea (haplotypes 8 and 10) and 10 haplotypes were unique to Cardinia (all the haplotypes observed for the area: haplotypes 2, 3, 4, 6, 7, 11, 12, 15, 18 and 19). Two additional haplotypes (haplotypes 9 and 17) were shared by individuals from Wyndham, Melton and Hume-Whittlesea. One haplotype (haplotype 16) was shared by individuals

in Wyndham and Melton, and one haplotype (haplotype 5) was shared by individuals in Melton and Hume–Whittlesea. We also examined the COI haplotype composition of each cluster of sites (figure 3). The central haplotype (haplotype 1) was present in each of the three site clusters from Wyndham, Melton and Hume–Whittlesea (clusters A–I). Patterns of haplotype diversity and exchange between site clusters were also similar in Wyndham, Melton and Hume–Whittlesea.

The haplotype network derived from the 112 aligned ND4 mitochondrial gene regions revealed similar results to those derived from COI (electronic supplementary material, S4). In total, there were 26 distinct haplotypes. Seven haplotypes were present in the Wyndham region (three unique to the region), eight in Melton (three unique), seven in Hume–Whittlesea (five unique) and 11 from the Cardinia region (10 unique). The haplotype network derived from the concatenated COI and ND4 gene regions also revealed similar results to those derived from COI alone (electronic supplementary material, S5). In total, there were 33 distinct haplotypes. Eight haplotypes were present in the Wyndham region (three unique to the region), nine in Melton (three unique), 11 in Hume–Whittlesea (eight unique) and 13 from the Cardinia region (all 13 unique to the region).

Additionally, three nuclear gene regions were aligned, using a subset of the 19 most variable COI samples. The fourth nuclear gene region, CRYBA1, failed to successfully amplify. Rhod and RAG-1 showed no variation between samples. POMC showed variation for eight individuals; however, this variation was not parsimoniously informative, as it occurred at heterozygous sites (refer to electronic supplementary material, S1). Due to the lack of diversity, there was no scope for further population-level analyses with the nuclear DNA.

3.2. Population structure

The Structure analysis using geographical region as prior information revealed two clear genetic units ($\Delta K = 34.740$ for $K = 2$ and $\Delta K = 0.024$ – 1.145 for $K = 3$ – 11). Population I contained all samples collected from the Wyndham, Melton and Hume–Whittlesea regions, while Population II contained all samples collected from the Cardinia region in the southeast (figure 4). Each of these populations contained 18 microsatellite alleles. We rejected the possibility of large allele dropout or scoring errors due to stuttering when testing each locus individually. There was no evidence of linkage disequilibrium ($p = 0.025$ – 0.045 following FDR correction for multiple comparisons). Overall, each locus generally conformed to HWE across both populations (table 1). Two loci, Lr6 and Lr9, showed significant deviations from HWE, but the pattern was not consistent across populations (Population I $H_0 = 0.586$ for Lr9 and Population II $H_0 = 0.367$ for Lr6). We observed significant homozygote excess, suggesting the presence of null alleles in Population II for Lr6; however, we chose to retain all loci for subsequent analyses, given there was no evidence of null alleles in Population I or when analysing the data as one population. Population I had 18 alleles, with an allelic richness of 2.33. Population II had 18 alleles, and an allelic richness of 2.43. Pairwise F_{ST} between the two genetic populations was low (0.004) and not statistically significant ($p = 0.176$).

3.3. Genetic bottleneck tests

There was only weak evidence for a genetic bottleneck based on mtDNA data for COI (table 1). The raggedness statistics showed evidence of weak genetic bottlenecks in both populations; however, neither population deviated significantly from expectations of neutrality, as revealed by Fu's F_s statistic and Tajima's D statistic. No substantial evidence of bottlenecks was found in either population for concatenated regions of COI and ND4 (electronic supplementary material, S6). A one-tailed Wilcoxon's test for heterozygosity excess in BOTTLENECK found Population I displayed evidence of a recent genetic bottleneck ($p = 0.031$); however, this did not remain statistically significant following FDR correction for multiple comparisons ($p = 0.063$). Similarly, the M -ratio tests on microsatellite loci did not detect evidence of a bottleneck in either of the populations. Using $\theta = 3.1$ (Population I) and $\theta = 0.967$ (Population II), the average M -ratio values were 0.817–0.888 and were higher than the M -critical values, of 0.695–0.697.

4. Discussion

This study sought to assess the genetic structure and diversity of remnant populations of *L. raniformis* around Melbourne, Australia's fastest growing city. We predicted that: (i) genetic diversity of these populations would be low due to past declines and more recent habitat loss and fragmentation, (ii) genetic bottlenecks would be evident, and (iii) genetic structuring would be present between remnant populations in Cardinia and the other three regions studied.

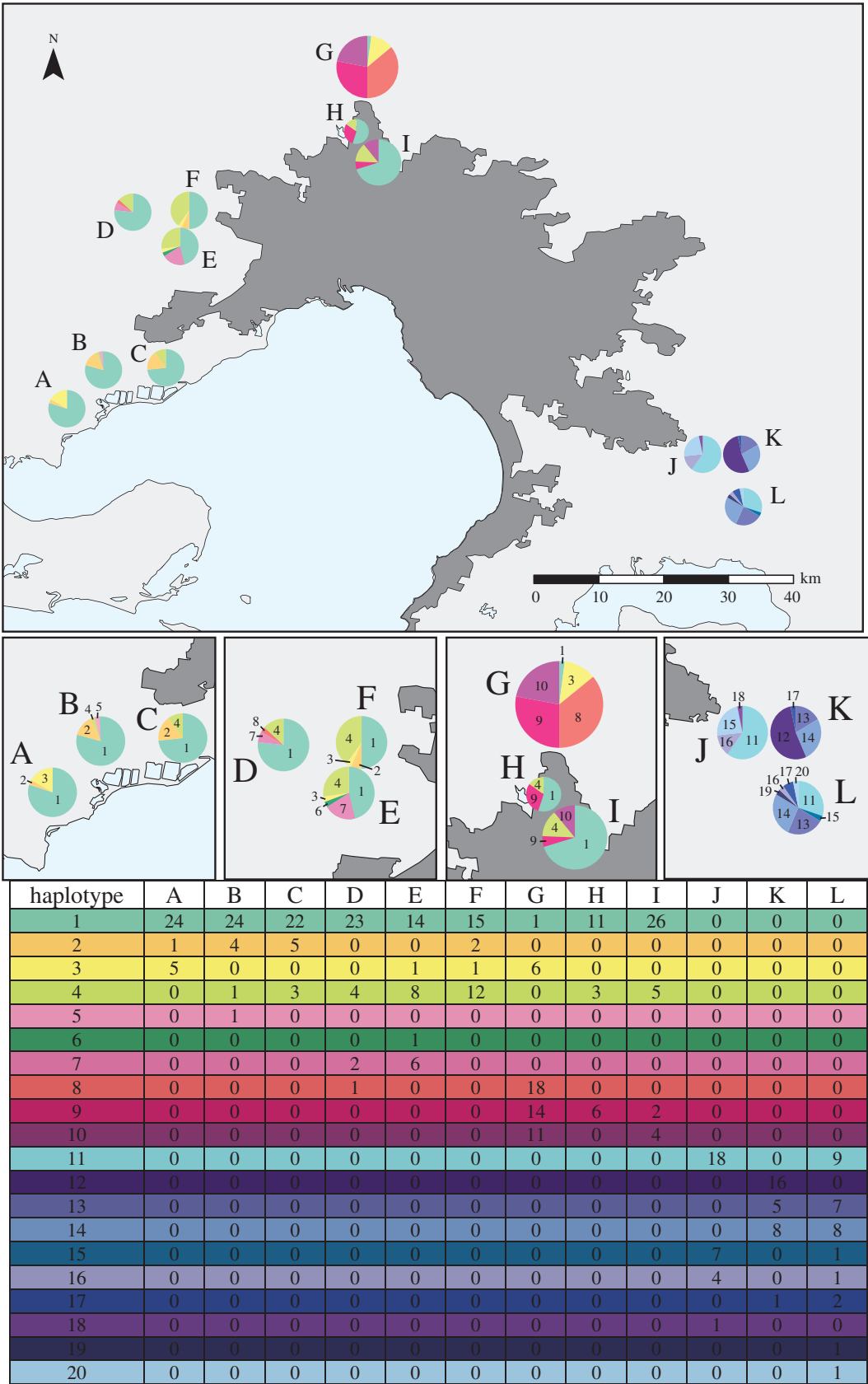


Figure 3. Geographical association of COI haplotypes. Each pie represents the haplotypes found in that cluster and the area of the pie is proportional to sample size. Clusters have been assigned letters and haplotypes numbered. See included table for the number of individuals displaying each haplotype.

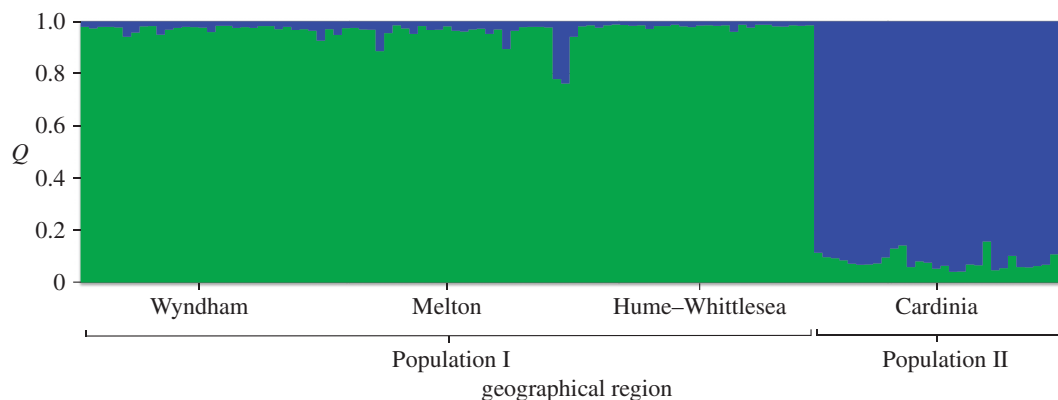


Figure 4. Structure bar plot ($K = 2$) with individuals organized by geographical region. Each vertical bar represents a single individual and estimates Q : the probability an individual belongs to a population of the given colour.

Table 1. Genetic variability of mtDNA (COI) and microsatellites in populations determined by STRUCTURE.

genetic diversity	Population I	Population II
<i>mtDNA</i>		
number of samples (N)	287	90
length (bp)	495	495
no. haplotypes	10	10
haplotype diversity (h)	0.658 (var = 0.001, s.d. = 0.028)	0.826 (var = 0.000, s.d. = 0.020)
nucleotide diversity (π)	0.003	0.006
average no. nucleotide differences (k)	1.463 (obs var = 2.009, CV = 0.970)	2.950 (obs var = 3.835, CV = 0.666)
no. polymorphic sites (S)	18	10
total no. mutations (E_{μ})	18	11
Tajima's test statistic (D)	-1.251 (not stat sig, $p > 0.1$)	0.954 (not stat sig, $p > 0.1$)
Fu's test statistic (F_s)	-0.853	0.659
raggedness index (r)	0.118	0.105
<i>microsatellites</i>		
observed heterozygosity (H_0)	0.586	0.550
expected heterozygosity (H_E)	0.608	0.636
allelic richness (AR)	2.330	2.430

4.1. Patterns of genetic structure and diversity

The mtDNA and nuclear DNA sequences revealed low levels of genetic diversity throughout remnant populations of *L. raniformis* around Melbourne, supporting our first hypothesis. Additionally, a large proportion of individuals included in our study shared one haplotype (haplotype 1), with few mutations between all the haplotypes present. In comparison, a study that looked at COI sequences across 34 amphibian species, from six families and 11 genera, reported an average nucleotide diversity of 0.203 which is considerably higher than the population-level diversity found in our study (0.003 and 0.006, table 1) [70].

Measures of genetic diversity within populations such as allelic richness, haplotype diversity, heterozygosity values and polymorphism have been found to be lower in amphibians in urban areas than in non-urban environments [2,71–75]. It is difficult to make direct comparisons of genetic diversity between species using microsatellites, which is exacerbated by the low number of microsatellites used for this study. Nevertheless, the measures of heterozygosity and allelic richness are broadly similar

to those of other anurans, including related taxa in Australia [76]. In a study of the green and golden bell frog (*Litoria aurea*), the sister species to *L. raniformis*, that covered approximately 1000 km, expected heterozygosity levels were reported as high (0.43–0.82, mean 0.69) when compared to other amphibian species [76]. A previous study [37] examined the structure and fragmentation of *L. raniformis* metapopulations in one of our study regions, Hume–Whittlesea. Using data from 11 microsatellite markers, the signature of a recent bottleneck was found at one site. This population was separated from nearby sites by a four-lane highway, which appeared to significantly reduce gene flow. Hale *et al.* [37] suggested that urbanization around Melbourne has the potential to reduce the genetic diversity of *L. raniformis* due to bottlenecks.

We hypothesized that genetic bottlenecks would be evident in the populations of *L. raniformis* studied here, due to both past population declines (resulting from chytridiomycosis in particular) and more recent habitat loss and fragmentation due to urbanization. However, the data did not support this hypothesis, with both mtDNA and nuclear microsatellite loci analyses failing to detect the signature of a bottleneck. For the microsatellite data, we assessed levels of heterozygosity excess, indicative of population size reduction. However, while commonly used, this method is strongly influenced by the more common alleles [77], which may explain why we did not detect a bottleneck. The ability to detect a prior bottleneck is also influenced by the population size pre-bottleneck, the mutational model and parameters chosen [78], statistical power [62,65] the magnitude of the bottleneck and how recently it occurred [78]. Indeed, populations can experience the negative impacts of a bottleneck for many generations before it is detected [65].

One or more of these factors may have influenced our ability to detect a population bottleneck in our study species. However, dramatic declines in the sister species *L. aurea* similarly found no signature of a bottleneck [76]. It seems likely, therefore, that the contemporary pattern of genetic diversity of *L. raniformis* around Melbourne is due to factors other than recent bottlenecks. In the first instance, it may be that remnant populations of this species around Melbourne may not have suffered the drastic reductions in abundance necessary to produce a bottleneck signature [65]. Secondly, the populations studied here may have retained sufficient local connectivity to obscure or prevent bottlenecks [79]. Previous research confirms that *L. raniformis* displays metapopulation dynamics, with occupancy, mark-recapture and genetic data confirming that migration over distances of 1–2 km is crucial to the viability of population networks [30,34,35]. Given their persistence, it may be inferred that the populations sampled during this study continue to exchange migrants with nearby populations, and remain part of a functioning metapopulation. This level of connectivity may have been sufficient to obscure or prevent genetic bottlenecks in the populations studied here. We encourage further research on the ecological and evolutionary drivers of the low genetic diversity but apparent absence of bottlenecks among remnant populations of *L. raniformis* around Melbourne, including more detailed microsatellite analyses.

Genetic structuring was present between remnant populations in Cardinia and the other three regions, due to both the historical and more recent isolation of this region, supporting our third hypothesis. This was demonstrated by both the mtDNA and microsatellite analyses. Of the four main regions in the study, Cardinia exhibited the highest level of genetic diversity and all haplotypes present there were unique to the region. Additionally, the microsatellite analyses revealed Cardinia should be considered a distinct genetic unit from the other regions.

4.2. Conservation implications

Our study indicates populations of *L. raniformis* from Cardinia in southeastern Melbourne are genetically distinct from the west and north of Melbourne, due to the presence of unique haplotypes and higher genetic diversity. Under Moritz's [80] definition, which incorporates reciprocal monophyly, the Cardinia region would not qualify as an Evolutionarily Significant Unit (ESU). However, we suggest that populations from this region should be regarded as a separate Management Unit (MU). MUs can be used to address current population structure and short-term management issues, and are considered distinct from ESUs [80]. Based on our results, we recommend that the maintenance of genetic diversity in the Cardinia region be prioritized and that the region should be considered genetically independent of the remainder of urban Melbourne.

The Victorian Government has classified suitable habitat for *L. raniformis* within the urban growth areas into two categories: (1) high-quality habitat that will be protected and managed for the species and (2) habitat of lower conservation significance that can be destroyed for urban development, but for which compensatory habitat is required [33]. Translocation represents a core component of conservation

planning for *L. raniformis* in Melbourne's urban growth areas [33]. Individuals occupying habitat designated for destruction (i.e. that defined as category 2 habitat, as above) will be translocated in cases where there are appropriate locations to receive animals, and where risks, including disease, are considered manageable [33]. Under this policy, some of the populations studied here in the Melton, Hume–Whittlesea and Cardinia areas will be translocated during future urban expansion. The appropriateness of amphibian and reptile translocations has been debated widely during the past 20 years and many attempted translocations have been unsuccessful [81]. There is a clear conflict in policies regarding translocations in Victoria. There is currently no evidence that populations of *L. raniformis* can be successfully relocated [32]. Indeed, all translocation attempts for this species and the closely related *L. aurea* have failed or the focal populations are performing poorly [82], despite *L. aurea* being the subject of more translocation attempts than any other Australian frog [83].

If future captive breeding programmes are required or translocations are attempted for *L. raniformis*, it is important that the geographical location of specimens is considered. This will help to maintain the genetic integrity and evolutionary potential of the species around Melbourne, two key objectives of Victoria's Flora and Fauna Guarantee Act 1988. This appears most important in the southeast Cardinia region, to maintain the levels of genetic diversity and the unique haplotypes found in the region. We caution that we only analysed neutral genetic diversity here, when in fact levels of genetic variability inferred from neutral markers are often poor correlates of quantitative variation for adaptively important traits [84]. Nevertheless, we advise that translocation of individuals between regions should be avoided and that fine-scale genetic studies within regions should be undertaken to determine the long-term viability of translocations within regions. By quantifying genetic structure and diversity of *L. raniformis* across Melbourne's urban fringe, using mtDNA and microsatellite markers, we are able to forewarn managers of the low genetic diversity displayed by remnant populations, identify genetic MUs and regional centres of haplotype endemism.

Ethics. This study was approved by the University of Melbourne Animal Ethics Committee (approval number 1011804.1) and the Victorian Department of Environment and Primary Industries (permit number 10005649).

Data accessibility. DNA sequences generated in this study have GenBank accessions: KP343052–KP343597.

Authors' contributions. Study design was led by C.K. with contributions from all authors. Field sampling was conducted by C.K., G.H. and A.H. Molecular laboratory work was conducted by C.K. and J.H., with assistance from J.M. and J.S. All data analyses were conducted by C.K. with assistance from J.M. and J.S. The paper was written by C.K. with contributions from all authors. All authors gave final approval for publication.

Competing interests. We declare we have no competing interests.

Funding. This study was supported by an Australian Research Council Linkage grant (LP0990161) and the National Environmental Research Program, Environmental Decisions Hub.

Acknowledgements. We thank S. Canessa (University of Melbourne) for field assistance.

References

- McKinney ML. 2002 Urbanization, biodiversity, and conservation. *Bioscience* **52**, 883–890. (doi:10.1641/0006-3568(2002)052[0883:UBAC]2.0.CO;2)
- Noel S, Lapointe F-J. 2010 Urban conservation genetics: study of a terrestrial salamander in the city. *Biol. Conserv.* **143**, 2823–2831. (doi:10.1016/j.biocon.2010.07.033)
- Irwin EG, Bockstael NE. 2007 The evolution of urban sprawl: evidence of spatial heterogeneity and increasing land fragmentation. *Proc. Natl Acad. Sci. USA* **104**, 20 672–20 677. (doi:10.1073/pnas.0705527105)
- Andren H, Angelstam P. 1988 Elevated predation rates as an edge effect in habitat islands: experimental evidence. *Ecology* **69**, 544–547. (doi:10.2307/1940455)
- Murcia C. 1995 Edge effects in fragmented forests: implications for conservation. *Trends Ecol. Evol.* **10**, 58–62. (doi:10.1016/S0169-5347(00)88977-6)
- Saunders DA, Hobbs RJ, Margules CR. 1991 Biological consequences of ecosystem fragmentation: a review. *Conserv. Biol.* **5**, 18–32. (doi:10.1111/j.1523-1739.1991.tb00384.x)
- Reed DH, Hobbs GR. 2004 The relationship between population size and temporal variability in population size. *Anim. Conserv.* **7**, 1–8. (doi:10.1017/S1367943004003476)
- Reed DH, Frankham R. 2003 Correlation between fitness and genetic diversity. *Conserv. Biol.* **17**, 230–237. (doi:10.1046/j.1523-1739.2003.01236.x)
- Armstrong DP, Seddon PJ. 2008 Directions in reintroduction biology. *Trends Ecol. Evol.* **23**, 20–25. (doi:10.1016/j.tree.2007.10.003)
- Tracy LN, Wallis GP, Efford MG, Jamieson IG. 2011 Preserving genetic diversity in threatened species reintroductions: how many individuals should be released? *Anim. Conserv.* **14**, 439–446. (doi:10.1111/j.1469-1795.2011.00448.x)
- Sunnucks P, Taylor AC. 2008 The application of genetic markers to landscape management. In *Landscape analysis and visualisation* (eds W Christopher, C Pettit, I Bishop, K Lowell, D Pullar, D Duncan), pp. 211–233. Berlin, Germany: Springer.
- Ricketts TH. 2001 The matrix matters: effective isolation in fragmented landscapes. *Am. Nat.* **158**, 87–99. (doi:10.1086/320863)
- Bos DH, Sites Jr JW. 2001 Phylogeography and conservation genetics of the Columbia spotted frog (*Rana luteiventris*; Amphibia, Ranidae). *Mol. Ecol.* **10**, 1499–1513. (doi:10.1046/j.1365-294X.2001.01295.x)
- Hedrick PW, Kalinowski ST. 2000 Inbreeding depression in conservation biology. *Annu. Rev. Ecol. Syst.* **31**, 139–162. (doi:10.1146/annurev.ecolsys.31.1.139)
- Moritz C. 2002 Strategies to protect biological diversity and the evolutionary processes that sustain it. *Syst. Biol.* **51**, 238–254. (doi:10.1080/10635150252899752)
- Huff DD, Miller LM, Chizinski CJ, Vondracek B. 2011 Mixed-source reintroductions lead to outbreeding depression in second-generation descendants of a native North American fish. *Mol. Ecol.* **20**, 4246–4258. (doi:10.1111/j.1365-294X.2011.05271.x)
- UNFPA. 2007 *State of world population 2007, unleashing the potential of urban growth*. New York, NY: United Nations Population Fund.
- Population Reference Bureau. 2009 World Population data Sheet, 28 November 2013.

19. ABS. 2013 *Regional population growth, Australia, 2012, cat. no. 3218.0*. Canberra, Australia: Australian Bureau of Statistics.
20. State of Victoria. 2013 *Plan Melbourne, metropolitan planning strategy*. Melbourne, Australia: Victorian State Government.
21. DPCD. 2009 *Delivering Melbourne's newest sustainable communities. Strategic impact assessment report*. Melbourne, Australia: Department of Planning and Community Development.
22. Clemann N, Gillespie G. 2010 *Draft national recovery plan for the growling grass frog Litoria raniformis*. Melbourne, Australia: Department of Sustainability and Environment.
23. Pyke GH. 2002 A review of the biology of the southern bell frog *Litoria raniformis* (Anura: Hylidae). *Aust. Zool.* **32**, 32–48. (doi:10.7882/AZ.2002.003)
24. Mahony M. 1999 Review of the declines and disappearances within the bell frog species group (*Litoria aurea* species group) in Australia. In *Declines and disappearances of Australian frogs* (ed. A Campbell), pp. 81–93. Canberra, Australia: Environment Australia.
25. IUCN. 2013 Red List of Threatened Species. Version 2013.1 [database on the Internet] 2013. See www.iucnredlist.org (accessed on 26 September 2013).
26. Mahony MJ *et al.* 2013 Identifying conservation and research priorities in the face of uncertainty: a review of the threatened bell frog complex in eastern Australia. *Herpetol. Conserv. Biol.* **8**, 519–538.
27. Hamer AJ, Lane SJ, Mahony MJ. 2010 Using probabilistic models to investigate the disappearance of a widespread frog-species complex in high-altitude regions of south-eastern Australia. *Anim. Conserv.* **13**, 275–285. (doi:10.1111/j.1469-1795.2009.00335.x)
28. Murray KA, Retallick RW, Puschendorf R, Skerratt LF, Rosauer D, McCallum HI, Berger L, Speare R, VanDerWal J. 2011 Assessing spatial patterns of disease risk to biodiversity: implications for the management of the amphibian pathogen, *Batrachochytrium dendrobatidis*. *J. Appl. Ecol.* **48**, 163–173. (doi:10.1111/j.1365-2664.2010.01890.x)
29. Wassens S, Watts RJ, Jansen A, Roshier D. 2008 Movement patterns of southern bell frogs (*Litoria raniformis*) in response to flooding. *Wildl. Res.* **35**, 50–58. (doi:10.1071/WR07095)
30. Heard GW, Scroggie MP, Malone BS. 2012 Classical metapopulation theory as a useful paradigm for the conservation of an endangered amphibian. *Biol. Conserv.* **148**, 156–166. (doi:10.1016/j.biocon.2012.01.018)
31. Heard GW, Scroggie MP, Malone BS. 2012 The life history and decline of the threatened Australian frog, *Litoria raniformis*. *Aust. Ecol.* **37**, 276–284. (doi:10.1111/j.1442-9993.2011.02275.x)
32. Heard GW, Scroggie MP, Clemann N. 2010 *Guidelines for managing the endangered growling grass frog in urbanising landscapes*. Heidelberg, Australia: Department of Sustainability and Environment.
33. DEPI. 2013 *Sub-regional species strategy for the growling grass frog*. East Melbourne, Australia: Department of Environment and Primary Industries.
34. Heard GW, McCarthy MA, Scroggie MP, Baumgartner JB, Parris KM. 2013 A Bayesian model of metapopulation viability, with application to an endangered amphibian. *Div. Distrib.* **19**, 555–566. (doi:10.1111/ddi.12052)
35. Hale J, Heard G, Smith K, Parris K, Austin J, Kearney M, Melville J. 2013 Structure and fragmentation of growling grass frog metapopulations. *Conserv. Genet.* **14**, 313–322. (doi:10.1007/s10592-012-0428-9)
36. Burns EL, Crayn DM. 2006 Phylogenetics and evolution of bell frogs (*Litoria aurea* species-group, Anura: Hylidae) based on mitochondrial *ND4* sequences. *Mol. Phylogenet. Evol.* **39**, 573–579. (doi:10.1016/j.ympev.2005.11.017)
37. Hale JM. 2010 Human-induced changes in the population genetic structure of frogs in south-eastern Australia. PhD thesis, University of Melbourne, Melbourne, Australia.
38. Wiens JJ, Fetzner Jr JW, Parkinson CL, Reeder TW. 2005 Hylid frog phylogeny and sampling strategies for speciose clades. *Syst. Biol.* **54**, 778–807. (doi:10.1080/10635150500234625)
39. Gomez-Mestre I, Wiens JJ, Warkentin KM. 2008 Evolution of adaptive plasticity: risk-sensitive hatching in neotropical leaf-breeding treefrogs. *Ecol. Monogr.* **78**, 205–224. (doi:10.1890/07-0529.1)
40. Bossuyt F, Milinkovitch MC. 2000 Convergent adaptive radiations in Madagascar and Asian ranid frogs reveal covariation between larval and adult traits. *Proc. Natl Acad. Sci. USA* **97**, 6585–6590. (doi:10.1073/pnas.97.12.6585)
41. Dolman G, Phillips B. 2004 Single copy nuclear DNA markers characterized for comparative phylogeography in Australian wet tropics rainforest skinks. *Mol. Ecol. Notes* **4**, 185–187. (doi:10.1111/j.1471-8286.2004.00609.x)
42. Schneider C, Cunningham M, Moritz C. 1998 Comparative phylogeography and the history of endemic vertebrates in the Wet Tropics rainforests of Australia. *Mol. Ecol.* **7**, 487–498. (doi:10.1046/j.1365-294x.1998.00334.x)
43. Drummond A *et al.* 2012 *Geneious v5*. 6. Auckland, New Zealand: Biomatters Ltd.
44. Hale J, Heard G, Smith K, Blacket M, Austin J, Melville J. 2011 Microsatellite loci for the endangered growling grass frog (*Litoria raniformis*), with cross amplification in other Australian frog species. *Conserv. Genet. Resour.* **3**, 593–595. (doi:10.1007/s12686-011-9412-9)
45. Dixon CJ. 2006 A means of estimating the completeness of haplotype sampling using the Stirling probability distribution. *Mol. Ecol. Notes* **6**, 650–652. (doi:10.1111/j.1471-8286.2006.01411.x)
46. Bandelt HJ, Forster P, Rohl A. 1999 Median-joining networks for inferring intraspecific phylogenies. *Mol. Biol. Evol.* **16**, 37–48. (doi:10.1093/oxfordjournals.molbev.a026036)
47. Crandall KA. 1994 Intraspecific cladogram estimation: accuracy at higher levels of divergence. *Syst. Biol.* **43**, 222–235. (doi:10.1093/sysbio/43.2.222)
48. Librado P, Rozas J. 2009 DnaSP v5: a software for comprehensive analysis of DNA polymorphism data. *Bioinformatics* **25**, 1451–1452. (doi:10.1093/bioinformatics/btp187)
49. Tajima F. 1989 The effect of change in population size on DNA polymorphism. *Genetics* **123**, 597–601.
50. Fu Y-X. 1997 Statistical tests of neutrality of mutations against population growth, hitchhiking and background selection. *Genetics* **147**, 915–925.
51. Harpending H. 1994 Signature of ancient population growth in a low-resolution mitochondrial DNA mismatch distribution. *Hum. Biol.* **66**, 591–600.
52. van Oosterhout C, Hutchinson WF, Wills DP, Shipley P. 2004 Micro-Checker: software for identifying and correcting genotyping errors in microsatellite data. *Mol. Ecol. Notes* **4**, 535–538. (doi:10.1111/j.1471-8286.2004.00684.x)
53. Rousset F. 2008 Genepop'007: a complete re-implementation of the genepop software for Windows and Linux. *Mol. Ecol. Resour.* **8**, 103–106. (doi:10.1111/j.1471-8286.2007.01931.x)
54. Benjamini Y, Hochberg Y. 1995 Controlling the false discovery rate: a practical and powerful approach to multiple testing. *J. R. Stat. Soc. B* **57**, 289–300.
55. Kalinowski ST. 2005 HP-RARE 1.0: a computer program for performing rarefaction on measures of allelic richness. *Mol. Ecol. Notes* **5**, 187–189. (doi:10.1111/j.1471-8286.2004.00845.x)
56. Peakall R, Smouse PE. 2006 GENALEX 6: genetic analysis in Excel. Population genetic software for teaching and research. *Mol. Ecol. Notes* **6**, 288–295. (doi:10.1111/j.1471-8286.2005.01155.x)
57. Pritchard JK, Stephens M, Donnelly P. 2000 Inference of population structure using multilocus genotype data. *Genetics* **155**, 945–959.
58. Hubisz MJ, Falush D, Stephens M, Pritchard JK. 2009 Inferring weak population structure with the assistance of sample group information. *Mol. Ecol. Resour.* **9**, 1322–1332. (doi:10.1111/j.1755-0998.2009.02591.x)
59. Earl DA, Vonholdt BM. 2012 STRUCTURE HARVESTER: a website and program for visualizing STRUCTURE output and implementing the Evanno method. *Conserv. Genet. Resour.* **4**, 359–361. (doi:10.1007/s12686-011-9548-7)
60. Evanno G, Regnaut S, Goudet J. 2005 Detecting the number of clusters of individuals using the software STRUCTURE: a simulation study. *Mol. Ecol.* **14**, 2611–2620. (doi:10.1111/j.1365-294x.2005.02553.x)
61. Pritchard J, Wen X, Falush D. 2010 *Documentation for structure software: version 2.3*, pp. 1–38. Chicago, IL: University of Chicago.
62. Cornuet J, Luikart G. 1996 Description and power analysis of two tests for detecting recent population bottlenecks from allele frequency data. *Genetics* **144**, 2001–2014.
63. Piry S, Luikart G, Cornuet J. 1999 Bottleneck: a computer program for detecting recent reductions in the effective population size using allele frequency data. *J. Heredity* **90**, 502–503. (doi:10.1093/jhered/90.4.502)
64. Garza J, Williamson E. 2001 Detection of reduction in population size using data from microsatellite loci. *Mol. Ecol.* **10**, 305–318. (doi:10.1046/j.1365-294x.2001.01190.x)
65. Peery MZ, Kirby R, Reid BN, Stoelting R, Doucet-Ber E, Robinson S, Vásquez-carrillo C, Pauli JN, Palsbøll PJ. 2012 Reliability of genetic bottleneck tests for detecting recent population declines. *Mol. Ecol.* **21**, 3403–3418. (doi:10.1111/j.1365-294x.2012.05635.x)
66. Manoukis NC. 2007 FORMATOMATIC: a program for converting diploid allelic data between common formats for population genetic analysis. *Mol. Ecol. Notes* **7**, 592–593. (doi:10.1111/j.1471-8286.2007.01784.x)
67. Parra-Olea G, Zamudio KR, Recuero E, Aguilar-Miguel X, Huacuz D, Zambrano L. 2012 Conservation genetics of threatened Mexican

- axolotls (*Ambystoma*). *Anim. Conserv.* **15**, 61–72. (doi:10.1111/j.1469-1795.2011.00488.x)
68. Beerli P. 2009 How to use migrate or why are Markov chain Monte Carlo programs difficult to use? In *Population genetics for animal conservation* (eds G Bertorelle, MW Bruford, HC Hauffe, A Rizzoli, C Vernesi), pp. 42–79. Cambridge, UK: Cambridge University Press.
69. Franks SJ, Pratt PD, Tsutsui ND. 2011 The genetic consequences of a demographic bottleneck in an introduced biological control insect. *Conserv. Genet.* **12**, 201–211. (doi:10.1007/s10592-010-0133-5)
70. Smith MA, Poyarkov Jr NA, Hebert PDN. 2008 CO1 DNA barcoding amphibians: take the chance, meet the challenge. *Mol. Ecol. Resour.* **8**, 235–246. (doi:10.1111/j.1471-8286.2007.01964.x)
71. Reh W, Seitz A. 1990 The influence of land use on the genetic structure of populations of the common frog *Rana temporaria*. *Biol. Conserv.* **54**, 239–249. (doi:10.1016/0006-3207(90)90054-5)
72. Hitchings SP, Beebee TJC. 1997 Genetic substructuring as a result of barriers to gene flow in urban *Rana temporaria* (common frog) populations: implications for biodiversity conservation. *Heredity* **79**, 117–127. (doi:10.1038/hdy.1997.134)
73. Hitchings SP, Beebee TJC. 1998 Loss of genetic diversity and fitness in Common Toad (*Bufo bufo*) populations isolated by inimical habitat. *J. Evol. Biol.* **11**, 269–283. (doi:10.1046/j.1420-9101.1998.11030269.x)
74. Arens P, van der Sluis T, van't Westende WPC, Vosman B, Vos CC, Smulders MJM. 2007 Genetic population differentiation and connectivity among fragmented Moor frog (*Rana arvalis*) populations in The Netherlands. *Landscape Ecol.* **22**, 1489–1500. (doi:10.1007/s10980-007-9132-4)
75. Noel S, Ouellet M, Galois P, Lapointe F-J. 2007 Impact of urban fragmentation on the genetic structure of the eastern red-backed salamander. *Conserv. Genet.* **8**, 599–606. (doi:10.1007/s10592-006-9202-1)
76. Burns EL, Eldridge ME, Houlden BA. 2004 Microsatellite variation and population structure in a declining Australian hylid *Litoria aurea*. *Mol. Ecol.* **13**, 1745–1757. (doi:10.1111/j.1365-294X.2004.02190.x)
77. Hartl DL, Clark AG. 2007 *Principles of population genetics*, 4th edn. Sunderland, MA: Sinauer Associates.
78. Williamson-Natesan EG. 2006 Comparison of methods for detecting bottlenecks from microsatellite loci. *Conserv. Genet.* **6**, 551–562. (doi:10.1007/s10592-005-9009-5)
79. Keller LF, Jeffery KJ, Arcese P, Beaumont MA, Hochachka WM, Smith JN, Bruford MW. 2001 Immigration and the ephemerality of a natural population bottleneck: evidence from molecular markers. *Proc. R. Soc. Lond. B* **268**, 1387–1394. (doi:10.1098/rspb.2001.1607)
80. Moritz C. 1994 Defining 'evolutionarily significant units' for conservation. *Trends Ecol. Evol.* **9**, 373–375. (doi:10.1016/0169-5347(94)90057-4)
81. Germano JM, Bishop PJ. 2009 Suitability of amphibians and reptiles for translocation. *Conserv. Biol.* **23**, 7–15. (doi:10.1111/j.1523-1739.2008.01123.x)
82. Koehler SL, Gilmore DC, Newell DA. 2015 Translocation of the threatened growling grass frog *Litoria raniformis*: a case study. *Aust. Zool.* **37**, 321–336. (doi:10.7882/AZ.2014.043)
83. White AW, Pyke GH. 2008 Frogs on the hop: translocations of green and golden bell frogs *Litoria aurea* in Greater Sydney. *Aust. Zool.* **34**, 249–260. (doi:10.7882/AZ.2008.002)
84. Bekessy SA, Ennos RA, Burgman MA, Newton AC, Ades PK. 2003 Neutral DNA markers fail to detect genetic divergence in an ecologically important trait. *Biol. Conserv.* **110**, 267–275. (doi:10.1016/S0006-3207(02)00225-2)